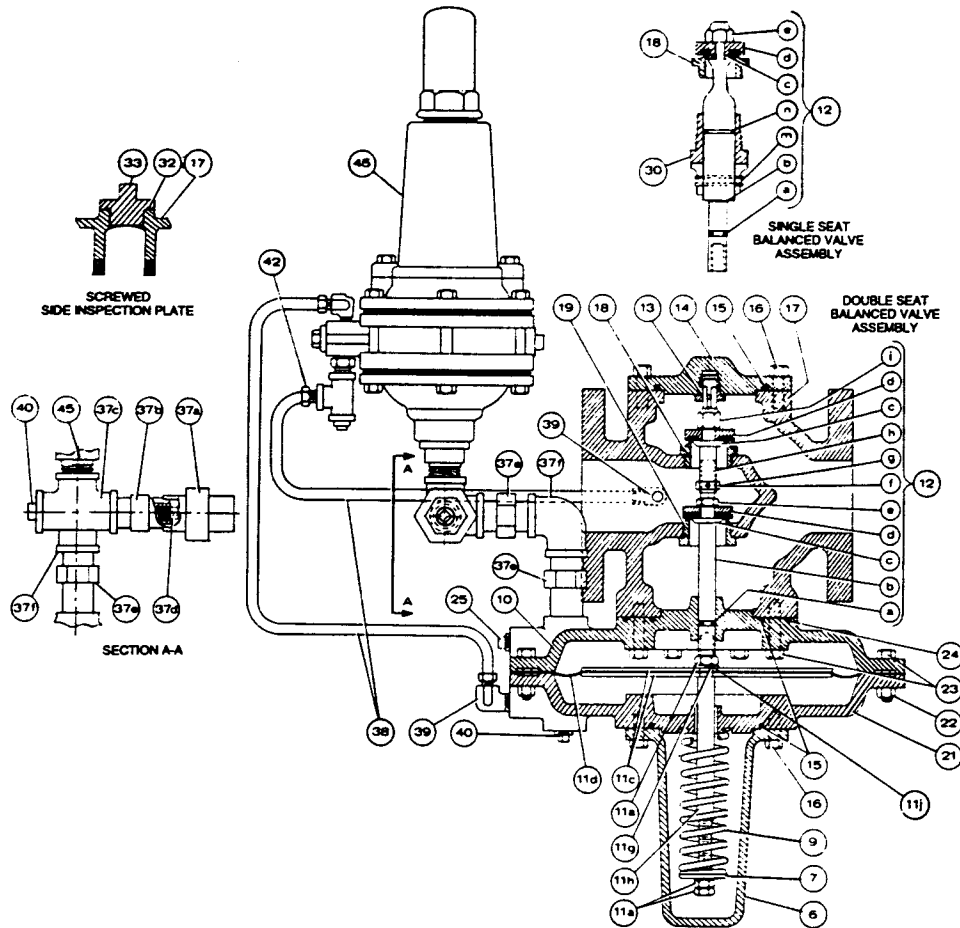




A BTR Company

Regulator Parts List 2" Model 1100



ILL. NO.	DESCRIPTION	PART NUMBER
6	Spring Housing	091-86-006-00
7	Spring Button	091-16-009-01
9	Spring, gray	138-32-021-04
	Spring, red	138-32-021-02
10	Diaphragm Case, body side	091-86-002-06
11a	Hex. Steel Nut, 3/8"-16, 3 used	903907
11c	Diaphragm Plate, 2 used	091-86-010-00
11d	Diaphragm	091-86-150-00
11g	Split Lockwasher 3/8"	932527
11h	Diaphragm Stem	091-86-058-00
11j	Diaphragm Seal Gasket	014-76-179-04
12	1 1/16" Single Seat Valve Assembly, Stainless Steel Trim Only, With Poly-U Red Valve	091-16-515-50
	Poly-U Tan Valve	091-16-515-00904
	Viton Valve	091-16-515-54
	Nylon Valve	091-16-515-60
	1 1/16" Double Seat Valve Assembly, Brass Trim, With Buna-N Valve	091-16-515-00
	Poly-U Red Valve	091-16-515-10
	Poly-U Tan Valve	091-16-515-19
	1 1/16" Double Seat Valve Assembly, Stainless Steel Trim, With Buna-N Valve	091-16-515-02
	Poly-U Red Valve	091-16-515-12
	Poly-U Tan Valve	091-16-515-00908
	Viton Valve	091-16-515-28
	Nylon Valve	091-16-515-20
	1" Single Seat Valve Assembly, Stainless Steel Trim Only, With Poly-U Red Valve	091-16-515-51
	Poly-U Tan Valve	091-16-515-00905
	Viton Valve	091-16-515-62
	Nylon Valve	091-16-515-61

ILL. NO.	DESCRIPTION	PART NUMBER
	1" Double Seat Valve Assembly, Brass Trim Only, With Buna-N Valve	091-16-515-01
	Poly-U Red Valve	091-16-515-11
	Poly-U Tan Valve	091-16-515-63
	1" Double Seat Valve Assembly, Stainless Steel Trim, With Buna-N Valve	091-16-515-03
	Poly-U Red Valve	091-16-515-13
	Poly-U Tan Valve	091-16-515-18
	Viton Valve	091-16-515-27
	Nylon Valve	091-16-515-21
	O-Ring, 3/8" x 1/2"	934007
12a	Male Valve Stem, 5 1/16", brass, for 1" & 1 1/16" double seat valve assembly	091-16-116-02
12b	Male Valve Stem, 5 1/16", stainless, for 1" & 1 1/16" double seat valve assembly	091-16-116-00
	*Special Male Valve Stem 4 9/16", brass, for 1" & 1 1/16" double seat valve assembly	091-16-116-10
	*Special Male Valve Stem, 4 9/16", stainless for 1" & 1 1/16" double seat valve assembly	091-16-116-12
	Valve Stem, stainless for 1" single seat valve assembly	091-00-016-07
	Valve Stem, stainless for 1 1/16" single seat valve assembly	091-00-016-06
12c	Valve Retainer, brass, for 1" single or double	091-16-016-03
	Valve Retainer, Brass V-Port 1" single or or double valve	091-16-012-04
	Valve Retainer, brass, for 1 1/16" single or double seat valve	091-16-018-02
	Valve Retainer, stainless, for 1" single or double seat valve	091-16-018-01
	Valve Retainer, stainless, for 1 1/16" single or double seat valve	091-16-018-00

*Only for old style C-F screwed bodies with B172 casting number.

ILL. NO.	DESCRIPTION	PART NUMBER
12d	1 1/8" Single Seat Molded Valve, All Trim, With Poly-U red (85-75 Duro) Poly-U Tan (85-95 Duro) Viton (85-75 Duro, Stamped V) Nylon	091-16-315-50 091-16-315-59 091-16-315-57 091-16-315-02
	1 1/8" Double Seat Molded Valve, All Trim, With Buna-N Black (50-55 Duro) Poly-U red (85-75 Duro) Poly-U Tan (85-95 Duro) Viton (85-75 Duro, Stamped V) Nylon	091-16-315-00 091-16-315-10 091-16-315-14 091-16-315-12 091-16-315-03
	1" Single Seat Molded Valve, All Trim, With Poly-U red (85-75 Duro) Poly-U Tan (85-95 Duro) Viton (85-75 Duro, Stamped V) Nylon	091-16-315-51 091-16-315-50 091-16-315-58 091-16-315-52
	1" Double Seat Molded Valve, All Trim, With Buna-N Black (50-55 Duro) Poly-U red (85-75 Duro) Poly-U Tan (85-95 Duro) Viton (85-75 Duro, Stamped V) Nylon	091-16-315-01 091-16-315-11 091-16-315-15 091-16-315-13 091-16-315-04
	1" Double Seat Molded Valve, Brass, V-Part, With Buna-N Black (50-55 Duro) Poly-U Red (85-75 Duro)	091-16-315-30 091-16-315-24
	1" Double Seat Molded Valve, Stainless Steel, V-Part, With Buna-N Black (50-55 Duro)	091-16-315-30
12e	Valve Locknut, brass, for double seat assembly	903920
	Valve Locknut, stainless, for double seat assembly	920303
	Valve Locknut, 3/8"-24 crown nylon, for single seat assembly	903936
12f	Valve Stem Locking Ring, stainless, for double seat assembly	091-16-043-01
12g	Set Screw, #12-24 x 1/2", slotted headless cup point	907694
12h	Female Valve Stem, brass, for double seat assembly	091-16-016-00
	Female Valve Stem, stainless, for double seat assembly	091-16-016-03
12i	Valve Guide, brass, for double seat assembly	091-16-012-00
	Valve Guide, stainless, for double seat assembly	091-16-012-0
12m	Roll Pin, 1/4" x 1 1/2" lg., for single seat assembly	901707 934015
12n	O-Ring, 3/4" x 1" single seat assembly	934011
	O-Ring, 3/8" x 3/4" for 1 1/8" single seat assembly	091-16-385-02 091-16-385-03 091-16-004-01 091-16-004-02 091-16-004-11 091-16-004-12 904079
13	Guide Bushing, brass, with pin	091-16-385-02
	Guide Bushing, stainless, with pin	091-16-385-03
14	Top Inspection Plate, iron	091-16-004-01
	Top Inspection Plate, steel	091-16-004-02
	C.I. Taped Travel Ind.	091-16-004-11
	Steel Taped Travel Ind.	091-16-004-12
15	TetraSeal (or O-Ring), 2 3/8" x 3"	904079
16	Hex. Cap Screw 3/4"-16 x 1" lg., 120,000# Tensile, 16 used	9100305

ILL. NO.	DESCRIPTION	PART NUMBER
17	FOLLOWING BODIES USE SCREWED DUCTILE IRON SIDE INSPECTION PLATE Body, Screwed, cast iron 250 psi Body, Flanged, ASA 125 lb. FF, cast iron, 10" F to F Body, Flanged, ASA 250 lb. RF, ductile iron	091-16-001-150 091-16-001-17 091-16-001-18
	FOLLOWING BODIES USE SCREWED STEEL SIDE INSPECTION PLATE Body, Flanged, ASA 300 lb. RF, cast steel Body, Flanged, ASA 600 lb. R.F. cast steel	091-16-001-16 091-16-001-01 091-16-029-01 091-16-029-05 091-16-029-00 091-16-029-04 091-16-028-01 091-16-028-05 091-16-029-00 091-16-029-04 091-66-033-00
18	Outlet Orifice, 1" brass Outlet Orifice, 1" stainless Outlet Orifice, 1 1/2" brass Outlet Orifice, 1 1/2" stainless	091-16-029-01 091-16-029-05 091-16-029-00 091-16-029-04
19	Inlet Orifice, 1" brass Inlet Orifice, 1" stainless Inlet Orifice, 1 1/2" brass Inlet Orifice, 1 1/2" stainless	091-16-028-01 091-16-028-05 091-16-029-00 091-16-029-04
21	Diaphragm Case, spring side	091-66-033-00
22	Hex. Steel Nut, 3/4"-16, 16 used	903650
23	Hex. Cap Screw, 3/4"-18 x 1 1/4" lg., 120,000# tensile, 24 used	910031
24	TetraSeal (or O-Ring), 4 3/8" x 4 3/8"	904085 906055
25	1/4" NPT Sq. Hd. Steel Pipe Plug	906055
30	Valve Stem Guide, stainless, 1 1/8" single seat assembly Valve Stem Guide, stainless, 1" single seat assembly	091-16-012-52 091-16-012-53
32	TetraSeal (or O-Ring) 1 1/2" x 1 1/4"	904086
33	Screwed Ductile Side Inspection Plate Screwed Ductile Side Inspection Plate, with 1/4" NPT Tap Screwed Steel Side Inspection Plate	091-16-072-04 091-16-072-05 091-16-072-01
37a	1/2" NPT 300 lb. M.I. Union, 600 lbs. W.O.G.	950082
37b	1/2" NPT 1 1/2" Hex steel Nipple with 1/4" NPT Tap	090-16-061-10 904528
37c	1/2" NPT M.I. Side Outlet Tee	090-16-135-01
37d	1/4" NPT Sq. Hd. Steel Pipe Plug with 3/32" orifice	904072
37e	1/2" NPT x 1 1/4" Hex. Steel Nipple, 2 used	904460
37f	1/2" NPT M.I. El	904460
38	1/4" O.D. x .032 wall J.I.C. Hyd. Sid. Resistance Welded Steel Tubing, price per ft.	750447
39	1/4" NPT x 1/4" Tube, Imperial Brass El, #89 lb.	903987
40	1/2" NPT Sq. Hd. Steel Pipe Plug	923053
42	1/4" NPT x 1/4" Tube, Imperial Connector, #83 lb.	903971
45	Type 511 Pilot, see RP 1370	
47	Nameplate (not shown)	091-16-086-000
49	Rd. Hd. Type U Drive Screw, #4 x 3/8" lg., (not shown)	903004
50	Socket Wrench, 1-1/2" hex. deep, for parts 18, 19, 30 (not shown)	091-16-328-00

☐ Minimum recommended spare parts.

Equimeter
INCORPORATED